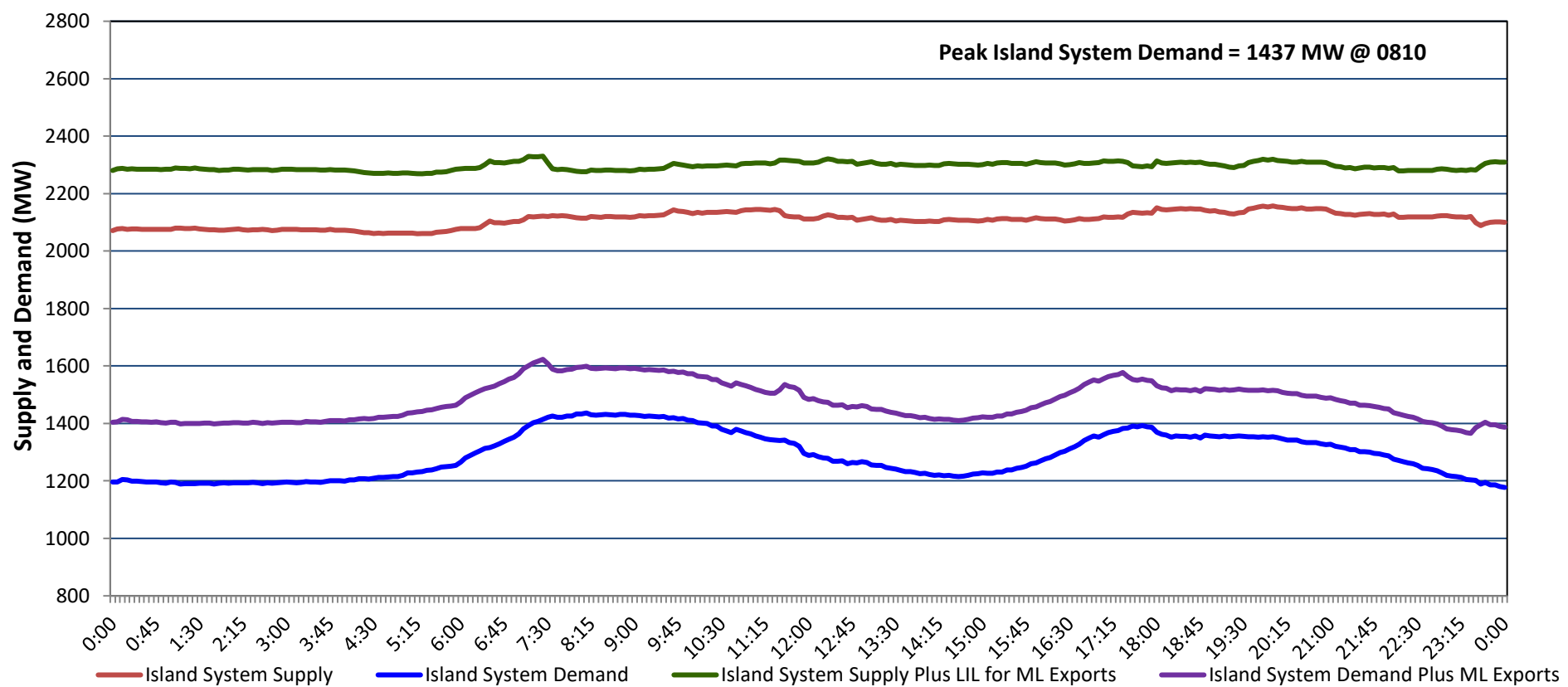


Newfoundland Labrador Hydro (NLH) Supply and Demand Status Report Filed Tuesday, January 28, 2025

Section 1 Island Interconnected System - Supply, Demand & Exports Actual 24 Hour System Performance For Monday, January 27, 2025



Island Supply Notes For January 27, 2025

- A** As of 0000 hours, October 20, 2024, Holyrood Unit 1 unavailable due to forced extension to planned outage (170 MW).
B As of 0554 hours, January 24, 2025, Granite Canal Unit unavailable due to forced outage (40 MW).
C At 0634 hours, January 27, 2025, Paradise River Unit unavailable due to forced outage (8 MW).
D At 1800 hours, January 27, 2025, Holyrood Unit 2 available at full capacity (170 MW).
E At 1931 hours, January 27, 2025, Paradise River Unit available(8 MW).

Section 2 Island Interconnected System - Supply, Demand & Outlook

Tue, Jan 28, 2025	Island System Outlook ²	Seven-Day Forecast	Island System Daily Peak Demand (MW)	
			Forecast ⁸	Adjusted ⁶
Island System Supply: ⁴	2,167 MW	Tuesday, January 28, 2025	1,390	1,294
NLH Island Generation: ^{3,7}	1,485 MW	Wednesday, January 29, 2025	1,475	1,378
NLH Island Power Purchases: ⁵	150 MW	Thursday, January 30, 2025	1,505	1,408
NP and CBPP Owned Generation:	210 MW	Friday, January 31, 2025	1,630	1,531
LIL/ML Net Imports to Island: ⁹	322 MW	Saturday, February 1, 2025	1,450	1,353
		Sunday, February 2, 2025	1,595	1,497
7-Day Island Peak Demand Forecast:	1,630 MW	Monday, February 3, 2025	1,565	1,467

Island Supply Notes For January 28, 2025

- Notes:
1. Generation outages for running and corrective maintenance are included. These are not unusual for power system operations. They generally do not impact customer supply. Hydro schedules outages to system equipment whenever possible to coincide with periods when customer demands are low and sufficient supply reserves are available. However, from time to time equipment outages are necessary and reserves may be impacted.
 2. As of 0800 Hours.
 3. Gross continuous unit output.
 4. Gross output from all Island sources (including Note 3).
 5. NLH Island Power Purchases include: ML Imports, Exploits Generation, Rattle Brook, Star Lake, Wind Generation and capacity assistance (when applicable).
 6. Adjusted for interruptible load and the impact of voltage reduction when applicable.
 7. Due to limitations inherent in the design of combustion turbines, the output of combustion turbines may be reduced in the event that ambient temperatures exceed the threshold required for full rated output. This threshold is dependent on the design of each turbine.
 8. Does not include ML Exports.
 9. LIL Import sunk in the Island System. Actual LIL flows will be restricted by various system conditions including, but not limited to, Island Load, ML Exports and Avalon Unit status.

Section 3 Island Peak Demand and Exports Information Previous Day Actual Peak and Current Day Forecast Peak

Mon, Jan 27, 2025	Island Peak Demand ¹⁰	8:10	1,437 MW
	Exports at Peak		162 MW
	LIL Net Imports to Island		7,887 MWh
Tue, Jan 28, 2025	Forecast Island Peak Demand		1,390 MW

- Notes: 10. Island Demand is supplied by NLH generation and purchases, LIL Imports plus generation owned and operated by Newfoundland Power and Corner Brook Pulp & Paper (Deer Lake Power, DLP).